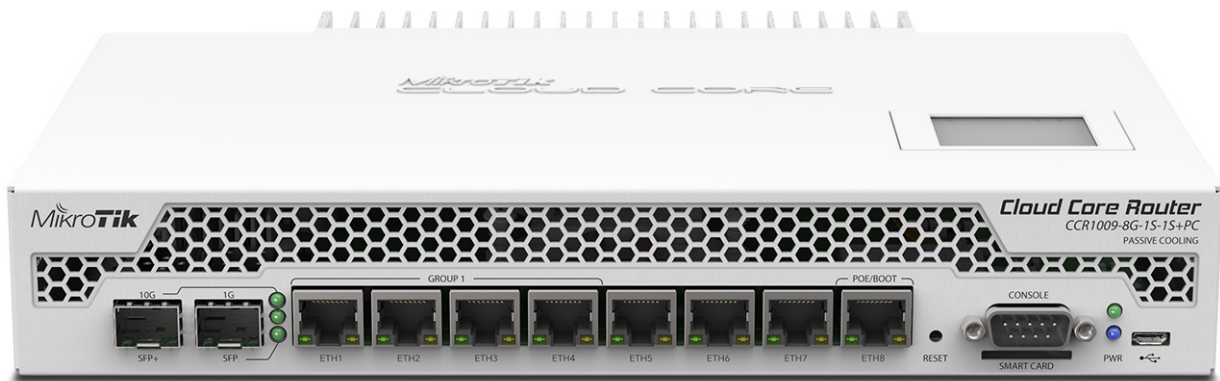


CCR1009 PC

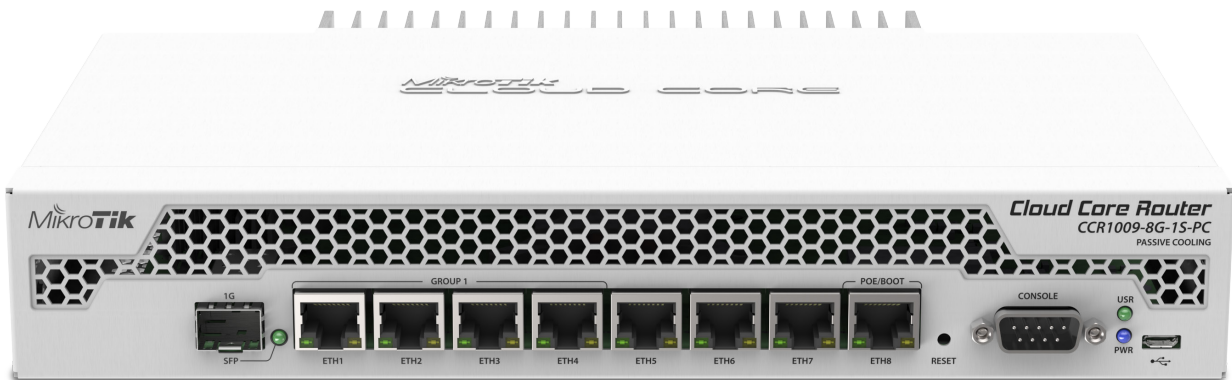
Our popular 9-core Cloud Core Router is now available in a new passive cooling enclosure. This CCR1009 unit is equipped with two heat-pipes and a specially designed heat-sink, so its completely silent.

The unit is powered by an external 24v 2.5A AC/DC adapter and supports power redundancy if you also power it from the PoE input port.

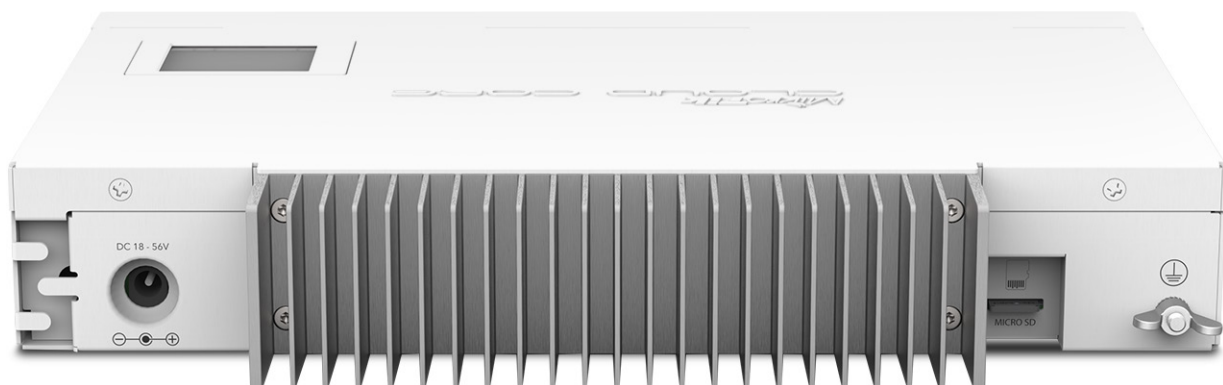
Two versions are available, the CCR1009-8G-1S-1S+PC additionally includes a LCD touchscreen, smart card slot, microSD and a SFP+ port for 10G connections.



CCR1009-8G-1S-1S+PC



CCR1009-8G-1S-PC



CCR1009-8G-1S-1S+PC

Specifications

Product code	CCR1009-8G-1S-1S+PC	CCR1009-8G-1S-PC
CPU nominal frequency	TILE-Gx9, 9 cores, 1 GHz	TILE-Gx9, 9 cores, 1 GHz
Size of RAM	2 GB	1 GB
Storage type	NAND	NAND
Storage size	128 MB	128 MB
10/100/1000 Ethernet ports	8	8
Number of USB ports	1	1
Power Jack	1	1
PoE in	Yes	Yes
Supported input voltage	14 V - 57 V	14 V - 57 V
Voltage Monitor	Yes	Yes
PCB temperature monitor	Yes	Yes
CPU temperature monitor	Yes	Yes
LCD	Yes	-
Dimensions	272x190x47mm	272x190x47mm
Operating System	RouterOS, level 6 license	RouterOS, level 6 license
Max Power consumption	30W	30W
SFP ports	1	1
SFP+ ports	1	-
USB slot type	microUSB type AB	microUSB type AB
Smart card	Yes	-
Storage expansion	microSD	-
Serial port	RS232	RS232
Weight	Package: 1.63 Kg; Unit: 916g	Package: 1.62 Kg; Unit: 892g
Suggested price	\$495	\$425

Included



24V 25A Power adapter



USB cable



Rack ears



IEC cord